

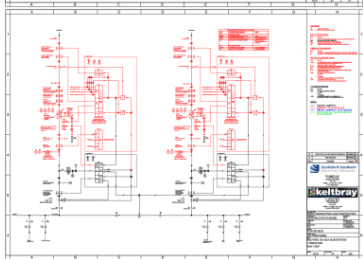
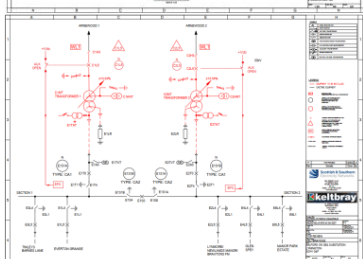
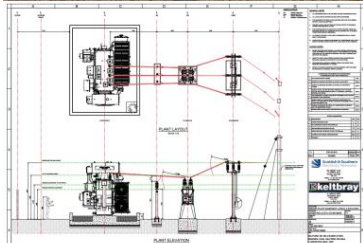
Collaboration and delivery
Partner with:



End Client:



OEMs used and collaborated with.
**Winder Power Transformers,
Morris Line Disconnectors, Brush
Circuit Breakers, TE Connectivity
Surge Arrestors**



Project Dashboard

Project Title: Milford on Sea 33/11kV Substation

Project Location: Milford On Sea, Lymington, Hampshire, SO41 0AP

Project Phase: Engineering design

Project Description: 13MVA, 33/11 kV transformers at Milford on Sea have been assessed as being in poor condition with existing transformers leaking oil into the soil directly due to the absence of a suitable bund and are prioritized for intervention. This work will be carried out as part of asset replacement program for RIIO-ED2 and are targeted for completion during 2024/25.

This scheme will improve Health Index of 33/11kV Transformers – from HI5 to HI1. Furthermore, This increased transformer rating will lift the Milford on Sea declared firm capacity from 13.0MVA to 23.8MVA. Apart from the replacement of the existing transformers, the following works will also be done as part of this project,

- Removal of existing 2 nos. auxiliary transformers.
- Replace existing Isolators with new manual Isolators.
- Install new circuit breakers in both transformer feeders.
- Replace protection panels and AVC panels as required in both local and remote ends.
- Replace LVAC board.

Project Highlights:

- HMF is currently involved in carrying out the complete detailed design for this project which involves Civil, Electrical as well System Studies.
- Liaising with Keltbray fully throughout the project life time and carrying out the role of Principal Designer for the project.

Key Deliverables:

- Civil Foundation Design for the new Equipment.
- Primary and Secondary Design including production of SLD's, Stage by Stage SLD's, MCP and Protection Schematics.
- System Studies including Earthing, Cable design and Protection Coordination.

Key Milestones:

- Aiming to share the final set of Civil and Electrical Drawings issued for construction.